

ntparts.com



IPC Integrated Professional Cleaning

IPCGansow

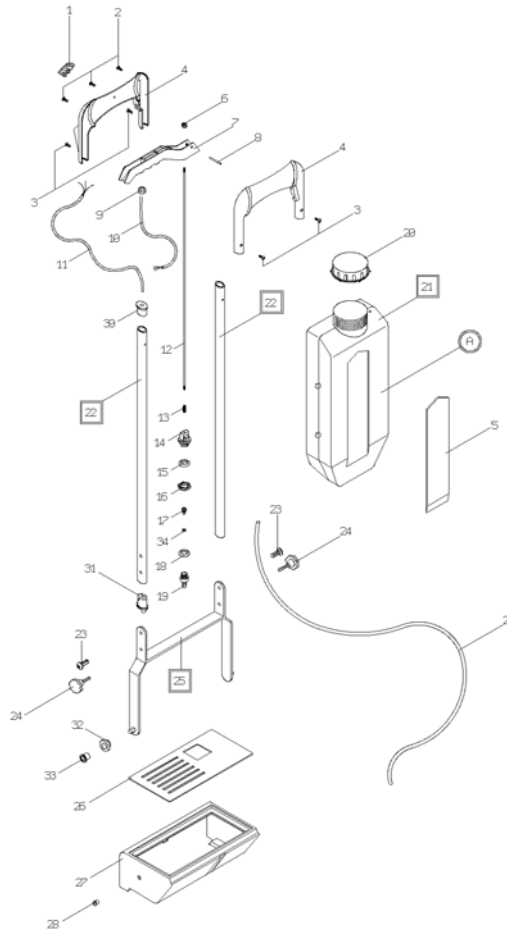
Spare Parts List

IPC . EAGLE

Ref: LPTE00029

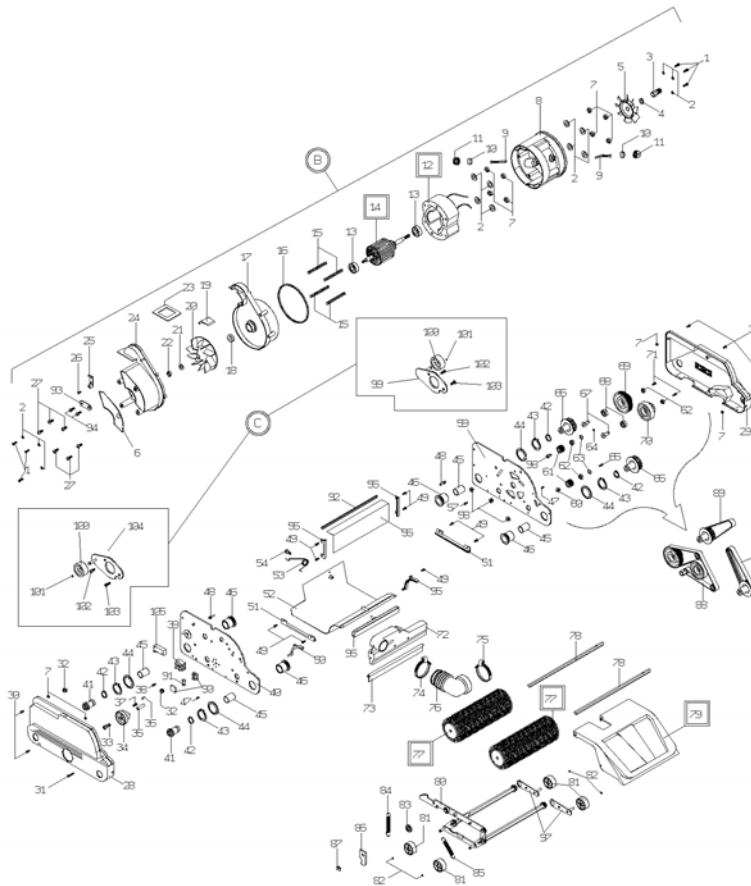
Model: Lavasciuga L10 nero-grigio sp.nera 110V

To Order Parts Call 1-888-702-5266 - <https://monsterparts.com>



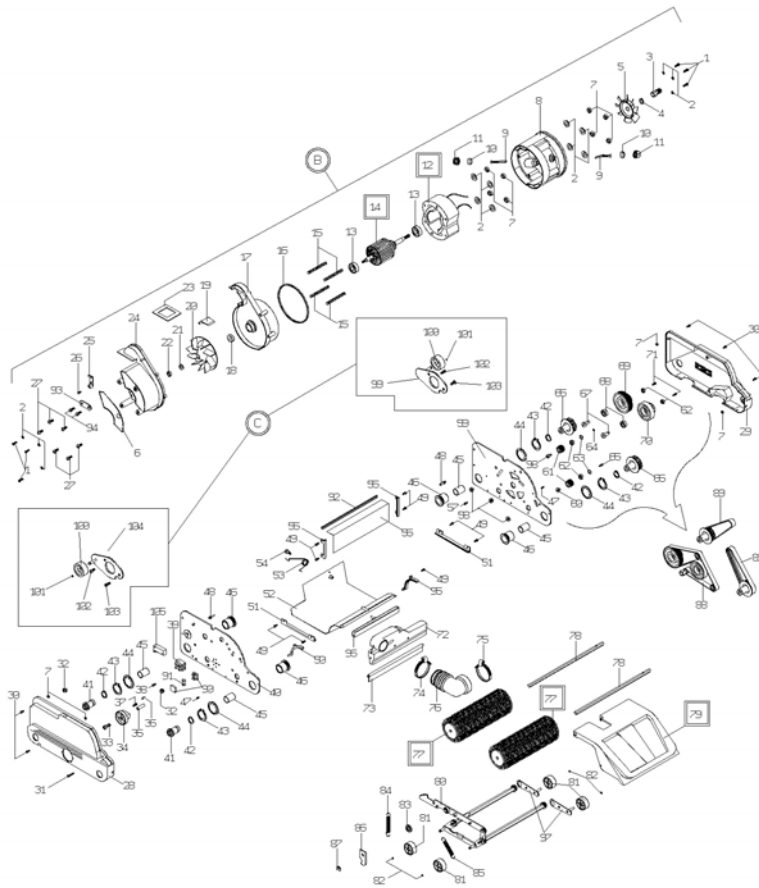
equipmentparts.com

Ref. K	Part N.	Customer Part N.	Description	Qty	Validity: From	To	Price
0001	MECI00024		SWITCH BIPOLARE LUMINOSO+CAPPUC.	1,00		01/2003	--
0001	MECI75810		SWITCH BIP. 250V RD.	1,00			--
0002	VTVT00079		SCREW AUTOF.TC UNI6954 3,9X22	3,00			--
0003	VTVT00040		SCREW AUTOF.TC UNI6954 3,5X10SP	4,00			--
0004	MPVR00784		HANDLE L10 GRIGIA	1,00			--
0005	ETET00119		LABEL SERBATOIO L10	1,00			--
0006	LAFN00280		NUT ASTINA SERBATOIO L10	1,00			--
0007	MPVR00783		LEVER COMANDO ACQUA L10	1,00			--
0008	LAFN00546		PIN X LEVA COMAN.ACQUA D.4X28	1,00			--
0009	MEVR00117		FAIR-LEAD L 10	1,00			--
000A	PMVR00299		TANK BIANCO COMPLETO L10	1,00			--
0010	MECB00114		CABLE ALIMENT.+SPINA USA L10	1,00			--
0011	MECB00102		CABLE ALIMENTAZ.MOTORE L10	1,00			--
0012	LAFN85614		CONTROL ROD TERSY 10 TK21002001	1,00			--
0013	MLML85611		SPRING TERSY 10 TK22052001	1,00			--
0014	RCVR85612		CONNECTOR TERSY 10 TK22552001	1,00			--
0015	GUGO01054		O-RING D. 15.08 X 2.62 NBR 70SH	1,00			--
0016	VTDD00018		NUT SERBATOIO L10	1,00			--
0017	LAFN85613		PIN TERSY 10 TK22302001	1,00			--
0018	GUGO63445		O-RING D. 10.78 X 2.62 NBR 70SH	1,00			--
0019	LAFN00639		INSERT PORTAGOMMA L10	1,00			--
0020	MPVR00391		CAP PER SERBATOIO L10	1,00			--
0021	MPVR75865		TANK BIANCO	1,00			--
0022	LAFN00441		TUBE MANICO NERO L10	2,00			--
0023	VTVT75725		SCREW TBEI M 6X 10 ISO 7380 ZB	2,00			--
0024	VTVT00037		HANDWHEEL D.30 M6X10	2,00			--
0025	LAFN00856		SUPPORT MANICO NERO L 10	1,00			--
0026	LAFN86950		COOLING GRILL VASCHETTA ACQUA L=10	1,00			--
0027	MPVR86559		VAT L10	1,00			--
0028	MPVR00392		CAP VASCHET.RECUPERO ACQUA	1,00			--
0029	TBBP00030		TUBE ACQUA L10	1,00			--
0029	MPVR00814		CAP PASSACAVO SUPERIORE	1,00			--
0029	MPVR00815		CAP PASSACAVO FERMO MANICO	1,00			--
0032	LAFN00167		BUSHING SUPPORTO MANICO L10	1,00			--
0033	MPVR00082		BUSHING ESAGONALE PLASTICA L10	1,00			--
0034	GUVR00021		RUBBER TENUTA ASTA SERBATOIO L10	1,00			--



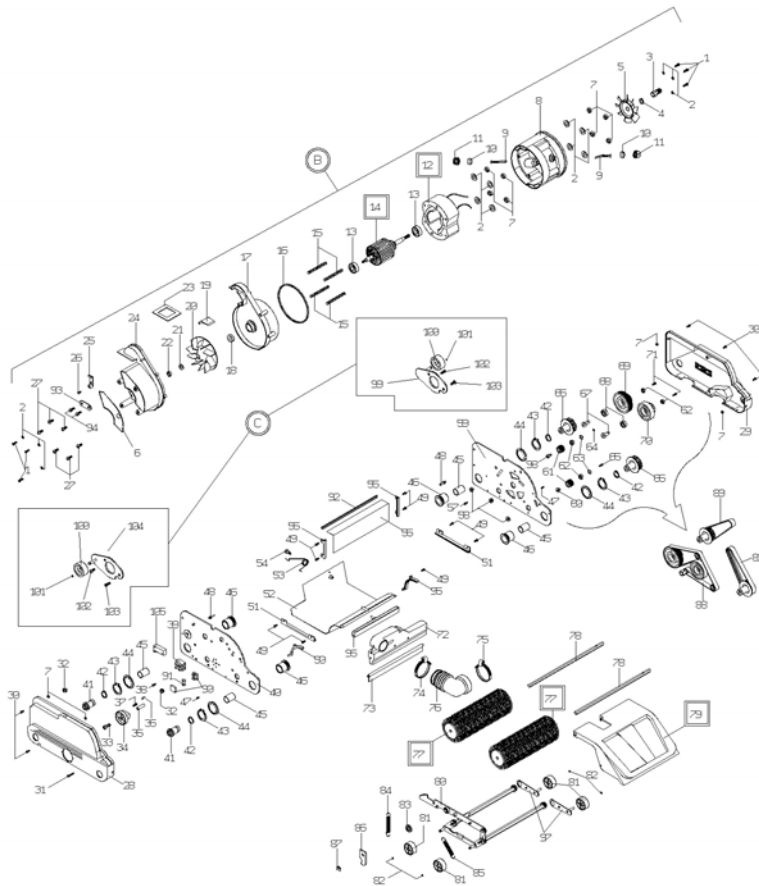
mentparts.com

Ref. K	Part N.	Customer Part N.	Description	Qty	Validity: From To	Price
0001	VTVT00065		SCREW TCCE UNI 5931 5X16 ZB	6,00	--	--
0002	VTRS00010		WASHER UNI 6592 5X10 ZB	14,00	--	--
0003	MTPL00026		PULLER ALBERO MOTORE L10	1,00	--	--
0004	VTRS00520		WASHER D.12	1,00	--	--
0005	VEVR00002		IMPELLER RAFFREDDAMENTO L10	1,00	--	--
0006	GUGO00048		GASKET MOTORE ESTERNA L 10	1,00	--	--
0007	VTDD00003		NUT UNI 5588 M5 ZB	13,00	--	--
0008	MEVR76747		DOOR CARBONCINI	1,00	--	--
0009	MOCC00025		CARBON MOTORE ELETTRICO L10	2,00	--	--
000B	PMQE00033		MOTOR ELETTRICO 110V- COMPL.L10	1,00	--	--
000C	KTRI00134		KIT WHELL DI TRASCINAMENTO L10	1,00	--	--
0010	GUGO00049		GASKET TAPPO L 10	2,00	--	--
0011	MPVR86589		CAP PORTACARBONCINI MOT.L10	2,00	--	--
0012	MOMO00009		MOTOR STATORE 110V	1,00	--	--
0013	CUVR00003		BEARING 6201 2RS	2,00	--	--
0014	MOMO00010		MOTOR INDOTTO 110V	1,00	--	--
0015	LAFN00547		PIN X TIRANTE MOTORE L 10	4,00	--	--
0016	GUVR76757		GASKET INTERNA MOTORE L10	1,00	--	--
0017	MPVR76748		CLOSURE MOTORE	1,00	--	--
0018	GUVR00006		PACKING DIN 3760 12X24X7 TCV-VIT	1,00	--	--
0019	MPVR76749		CLOSURE ASPIRAZIONE	1,00	--	--
0020	VEVR76743		IMPELLER ASPIRAZIONE	1,00	--	--
0021	VTRS00025		WASHER GROWER UNI 1751 6X11 ZB	1,00	--	--
0022	VTDD00004		NUT UNI 5588 M6 ZB	1,00	--	--
0023	GUVR76758		GASKET VASCHETTA L10	1,00	--	--
0024	MPVR76750		PUMP COVER ASPIRAZ.TERSY TK21202007	1,00	--	--
0025	VTVT75954		LEVER	1,00	--	--
0026	VTVT15530		SCREW TCB-TC 2.9X13 UNI6954	1,00	--	--
0027	VTVT63007		SCREW TCCR 4.8X25	6,00	--	--
0028	MPVR00409		CRANKCASE DESTRO NERO L10	1,00	--	--
0029	MPVR00412		CRANKCASE SINISTRO NERO L10	1,00	--	--
0030	VTVT00058		SCREW TCCE UNI 5931 5X12 ZB	5,00	--	--
0031	VTVT00083		SCREW TSCE UNI 5933 4X16 ZB	1,00	--	--
0032	MEVR00119		RUBBER PASSACAVO 15X8X10	2,00	--	--
0033	VTVT00084		SCREW TCCE UNI 5931 5X50 ZB	1,00	--	--
0034	VTVR75772		SMALL KNOB	1,00	--	--
0035	LAFN00170		BUSHING REGOLAZIONE ALTEZZA L10	1,00	--	--
0036	LAFN00547		PIN X TIRANTE MOTORE L 10	1,00	--	--
0037	MLML75965		SPRING H.22 TERSY10	1,00	--	--



mentparts.com

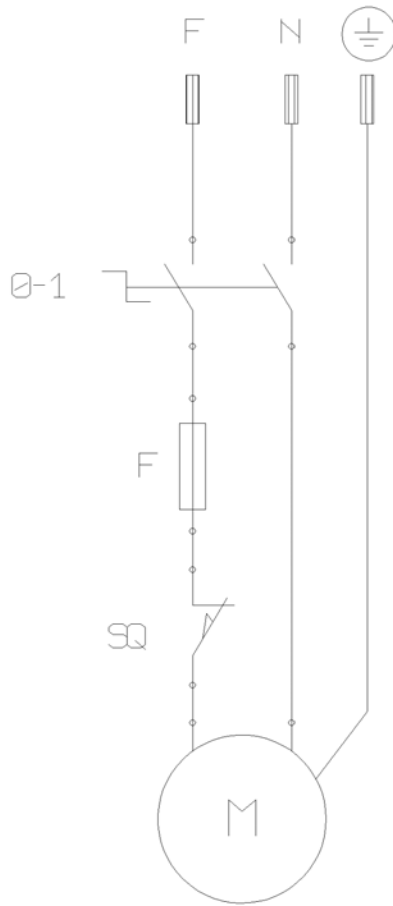
Ref. K	Part N.	Customer Part N.	Description	Qty	Validity: From To	Price
0038	VTVT00088		SCREW WTOP.TC UNI 6954 2,9X16	1,00	--	--
0039	MEVR00004		CONNECTOR 1 POLO 4 MMQ	2,00	--	--
0040	MFVR49486		BODY SIDE L10 DX ALL.	1,00	--	--
0041	LAFN00168		BUSHING X PERNO SPAZZOLA L10	2,00	--	--
0042	CUVR00001		RING WR 20A	4,00	--	--
0043	VTAE12644		CLIP CLIP D. 30 UNI 7435	4,00	--	--
0044	VTRS85922		WASHER D.46 TK1105771	4,00	--	--
0045	LAFN00181		BUSHING X FIANCATA+SINTERIZZATA	4,00	--	--
0046	LAFN00181		BUSHING X FIANCATA+SINTERIZZATA	4,00	--	--
0047	VTVT00086		GRUB SCREW UNI 5927 5X10 CON PUNTA	2,00	--	--
0048	LAFN00548		PIN SUPPORTO VASCHETTA L 10	2,00	--	--
0049	VTVT00081		SCREW TSCE UNI 5933 4X8 ZB	9,00	--	--
0050	LAFN76762		SUPPORT LAMIERA CURVO	1,00	--	--
0051	LAFN76763		SUPPORT INFERIORE LAMIERA	2,00	--	--
0052	LAFN76765		SHEET METAL PA.INFERIORE	1,00	--	--
0053	MLML85187		SPRING TERSY 10 22052002	1,00	--	--
0054	LAFN85183		PIN TERSY 10 22302005	1,00	--	--
0055	MPVR00805		SUPPORT LAMIERA POSTERIORE L10	2,00	--	--
0056	LAFN00913		SHEET METAL PA.POSTERIORE INOX L10	1,00	--	--
0057	VTVT08939		SCREW M 5X10 TSPEI ZINC. UNI	1,00	--	--
0058	LAFN00339		RING NUT DI FISSAGGIO L 10	3,00	--	--
0059	MFVR49487		BODY SIDE L10 SX ALL.	1,00	--	--
0060	LAFN00549		PIN PULEGG.TENDICINGHIA L 10	1,00	--	--
0061	MTPL00027		PULLEY TENDICINGHIA L10	2,00	--	--
0062	CUVR00014		BEARING 625 2Z -MARCA-	4,00	--	--
0063	VTAE87278		SEEGER ESTERNO DIN 471 D.17	2,00	--	--
0064	VTAE00011		SEEGER ESTERNO DIN 471 D.5	1,00	--	--
0065	VTVT19236		SCREW TCEI 5X20 UNI 5931	1,00	--	--
0066	MTPL00024		PULLEY RIGATA MOVIM. SPAZZ. L10	2,00	--	--
0067	LAFN00171		SPACER PER PULEGGE L10	2,00	--	--
0068	CUVR00013		BEARING 629 2RS -MARCA-	2,00	--	--
0069	MTPL76000		PULLEY L10	1,00	--	--
0070	MTPL00025		PULLEY PICCOLA LISCIA L10 ALLUM	1,00	--	--
0071	VTVT00080		SCREW TCCE UNI 5931 5X40 ZB	2,00	--	--
0072	MPVR75872		VAT L10	1,00	--	--
0073	TBBP75939		RUBBER ASPIRAZIONE	1,00	--	--
0074	FSVR00004		CLAMP 32-50 B5	1,00	--	--
0075	FSVR62782		CLAMP 6B D.40-60	1,00	--	--
0076	MPVR00785		SLEEVE IN GOMMA L10	1,00	--	--



mentparts.com

Ref. K	Part N.	Customer Part N.	Description	Qty	Validity: From To	Price
0077	SPPV75796		BRUSH	2,00	--	--
0078	LAFN86107		PIN BRSY 10 TK22302007	2,00	--	--
0079	MPVR00405		HOOD SUPER.L10 GRIGIO SILVER	1,00	--	--
0080	PMVR00005		CHASSIS L10	1,00	--	--
0081	RTRT76001		WHEEL d.40x17	4,00	--	--
0082	VTAE13935		CLIP D. 7 UNI 7435	4,00	--	--
0083	MPVR00082		BUSHING ESAGONALE PLASTICA L10	1,00	--	--
0084	MLML86565		SPRING SGANCIO CARRELLO L10	1,00	--	--
0085	MLML00030		SPRING SUPPORTO CARRELLO L10	1,00	--	--
0086	LAFN00361		LEVER SGANCIO MANICO L10	1,00	--	--
0087	VTAE00012		SEEGER RADIALE UNI 7434 D.10	1,00	--	--
0088	MTCG75778		BELT MULTIGRIP P2	1,00	--	--
0089	MTCG75779		BELT POLY-V J5 150	2,00	--	--
0090	MEVR85961		FUSE-HOLDER L 10 TK13802010	1,00	--	--
0091	MEVR00143		FUSE 8A 250V 5X20	1,00	--	--
0092	PMVR00298		PROTECTION LAMIERA POSTERIORE	1,00	--	--
0093	LAFN76751		REINFORCEMENT LEVA CHIUSURA	1,00	--	--
0094	VTVT15530		SCREW TCB-TC 2.9X13 UNI6954	1,00	--	--
0095	LAFN76764		SUPPORT LAMIERA CURVO	1,00	--	--
0096	MPVR00390		DIFFUSER ACQUA	1,00	--	--
0097	LAFN00367		CONNECTING ROD X CARRELLO L10 ZINCATA	2,00	--	--
0098	LAFN00549		PIN PULEGG.TENDICINGHIA L 10	1,00	--	--
0099	LAFN00661		SUPPORT SX RUOTA TRASC.+PERNO L10	1,00	--	--
0100	RTRT76012		WHEEL SCIOLTA 75/M/G	2,00	--	--
0101	VTAE00003		SEEGER RADIALE TIPO H UNI7434 D8	2,00	--	--
0102	VTAE00616		SCREW M 4x18 STEAM GUN	2,00	--	--
0103	LAFN00058		SCREW TCCE UNI 5931 5X12 ZB	2,00	--	--
0104	LAFN00868		SUPPORT DX RUOTA TRASC.+PERNO L10	1,00	--	--
0105	MECI44780		MICROSWITCH D2VW-5L2A-1M OMR	1,00	--	--

To Order Parts Call 1-888-702-5326



0-1 Interruttore/Switch
 F Fusibile/Fuse
 M Motore/Motor
 SQ Micro/Microswitch

TS.COM

Ref. K	Part N.	Customer Part N.	Description	Qty	Validity:		Price
					From	To	
000F	MEVR85961		FUSE-HOLDING L 10 TK13802010	1,00			--
00-1	MECI00024		SWITCH BIPOLARE LUMINOSO+CAPPUC.	1,00			--
00SQ	MECI44780		MICROSWITCH D2VW-5L2A-1M OMR	1,00			--

To Order Parts Call 1-888-702-5346