

Studebaker AirPath Carpet Dryer

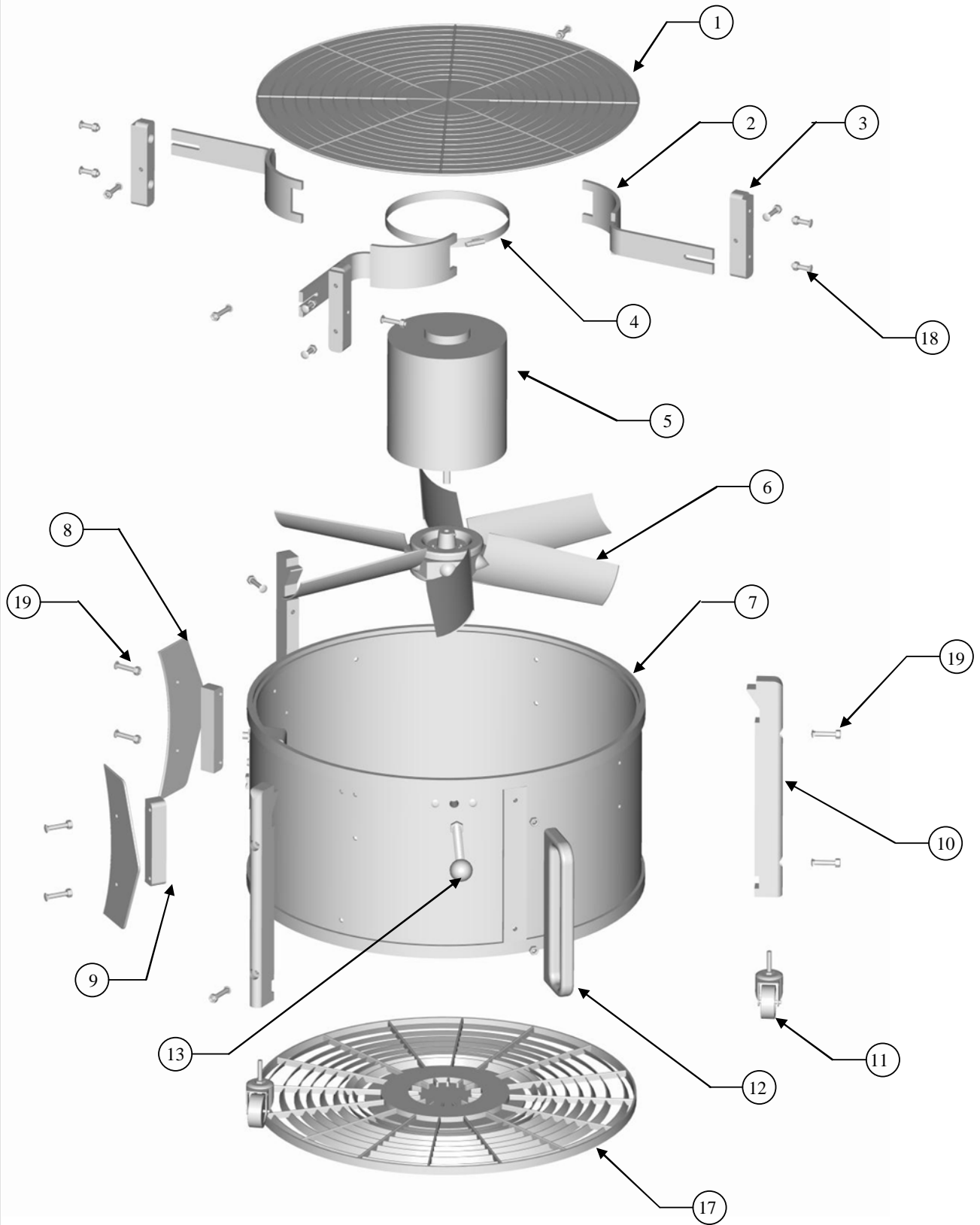
Symbol Definition

- * - multiple components to choose from for different models: voltage, size, color, etc.
- + - if you order this item, you may need to order additional items marked with same number of +'s in order to upgrade or complete repair

Find#	Part Description	Part #		
1	GRILL- UPPER AIR PATH DRYING SYSTEM	04-01431	ea.	1
2	BRACKET - MOTOR MOUNT AIR PATH DRYING SYSTEM	04-01432	ea.	4
3	MOTOR MOUNT - AIR PATH DRYING SYSTEM	04-01433	ea.	4
4	HOSE CLAMP - MOTOR MOUNT RETAINING RING AIR PATH DRYING SYSTEM	04-01434	ea.	2
5	MOTOR - ELECTRIC AIR PATH DRYING SYSTEM	04-01435	ea.	1
6	FAN BLADE - 8 BLADE 35 DEGREE AIR PATH DRYING SYSTEM	04-01436	ea.	1
7	HOUSING - CYLINDER AIR DRYING SYSTEM	04-01437	ea.	1
8	CORD WRAP - AIR DRYING SYSTEM	04-01438	ea.	2
9	BRACKET - CORD WRAP AIR DRYING SYSTEM	04-01439	ea.	2
10	LEG - CASTER MOUNTING AIR DRYING SYSTEM	04-01440	ea.	3
11	WHEEL - CASTER AIR DRYING SYSTEM	04-01441	ea.	3
12	HANDLE -AIR DRYING SYSTEM	04-01442	ea.	1
13	ROD - ADJUSTMENT AIR DRYING SYTEM	04-01443	ea.	1
14	BRACKET - ADJUSTMENT 2.75" AIR DRYING SYTEM	04-01444	ea.	1
15	KNOB - ADJUSTMENT AIR DTYING SYSTEM	04-01445	ea.	1
17	GRILL - LOWER AIR PATH DRYING SYSTEM	04-01446	ea.	1
18	BOLT - 1.25 W/ NUT AIR DTYING SYSTEM	04-01447	ea.	14
19	BOLT - 1.50 W/ NUT AIR DRYING SYSTEM	04-01448	ea.	10
20	PLATE - SWITCH PLATE 3.5 X 4.5 AIR DRYING SYSTEM	04-01449	ea.	1
21	SWITCH -ROCKER 30 AMP AIR DRYING SYSTEM	04-01450	ea.	1
22	LIGHT - CAUTION AIR DRYING SYSTEM	04-01451	ea.	1
23	STRAIN RELIEF - AIR DRYING SYSTEM	04-01452	ea.	1
24	BOX - JUNCTION AIR DRYING SYSTEM	04-01453	ea.	1
25	WIRING HARNESS - AIR DRYING SYSTEM	04-01454	ea.	1
26	POWER CORD - 12/3 SJTW AIR DRYING SYSTEM	04-01455	ea.	1

To Order Parts Call 1-888-702-5326 - <https://monsterfloorpartsequipment.com>

AirPath Pictorial Breakdown



To Order